

WEICON WP



Pasty | high strength | ceramic-filled | extremely wear-resistant | viscoplastic and impact-resistant

WEICON WP serves as protection for highly stressed surfaces. A coating with the epoxy resin system offers high strengths against wear and abrasion and is extremely resistant to chemicals. Plastic Metal WEICON WP prevents metal loss and replaces previously applied wear-resistant alloys, ceramic tiles and rubber linings as well as welded metal coatings. It can be used either for the regeneration of worn metal surfaces or as a wear-resistant coating. A particularly high level of protection is achieved when the wear is caused by particles hitting sideways.

Characteristics

Base	epoxy
Filler	Ceramicbeats
Texture	pasty
Colour	grey

Processing

Processing temperature	+15°C to +40°C
Component temperature	>3 °C above dew point
relative air humidity	< 85 %
Mixing ratio by weight	100:100
Mixing ratio by volume	100:100
Viscosity of the mixture	at +25 °C 900.000 mPa·s
Density of the mixture	2,2 g/cm³
Consumption	Layer thickness 1.0 mm 2.2 kg/m²
max. layer thickness	per step 20 mm

Curing

Pot life	at 20 °C, 2 kg batch	30 min.
Additional layer after	(35 % strength)	7 h
Working strength after	(80 % strength)	12 h
Final strength	(100 % strength)	36 h
Shrinkage		0,11 %

Mechanical properties after curing

- measured after curing at		24 h RT + 4 h 60 °C
Tensile strength	DIN EN ISO 527-2	23 MPa
Elongation at break (tensile)	DIN EN ISO 527-2	3,8 %
E-modulus (tensile)	DIN EN ISO 527-2	2500-2900 MPa
Compressive strength	DIN EN ISO 604	51 MPa
Bending strength	DIN EN ISO 178	35 MPa
Impact strength	DIN EN ISO 179-1/1eU	12 kJ/m²
Hardness (Shore D)	DIN ISO 7619	75±3
Adhesive strength	DIN EN ISO 4624	24 MPa

Thermal parameters

Temperature resistance		-35°C (-4°F) to +120°C (+248°F)
Tg after curing at room temperature (DSC)		~ +64 °C
Tg after tempering (at 120°C) (DSC)		+87 °C
Heat deflection resistance	DIN EN ISO 75-2	+65 °C
Thermal conductivity	DIN EN ISO 22007-4	0,8 W/m·K
Heat capacity	DIN EN ISO 22007-4	0,78 J/(g·K)

Electrical parameters

Resistance	DIN EN 62631-3-1	2,2·10 ¹¹ Ω·m
magnetic		no

Specific properties

IMPA Code		812957/58
-----------	--	-----------

Instructions for use

When using WEICON products, the physical, safety-related, toxicological and ecological data and regulations in our EC safety data sheets (www.weicon.com) must be observed.

Surface pre-treatment

The successful application of WEICON WP depends on the thorough preparation of the surfaces. This is the most important factor for overall success. Dust, dirt, oil, grease, rust and moisture or wetness have a negative impact on the adhesion. Therefore, before processing WEICON WP, the following points must be observed: The areas to be bonded or repaired must be free of any oil, grease, dirt, rust, oxides, paint and other impurities or residues. For cleaning and degreasing, we recommend WEICON Cleaner Spray S.

Smooth and particularly heavily soiled surfaces should additionally be treated by mechanical surface pre-treatment, e.g. by grinding or preferably by blasting. In case of blasting,

the surface should be brought to a degree of purity of SA 2 ½ - "Near White Blast Cleaning" (according to ISO 8501/1-2, NACE, SSPC, SIS). In order to achieve an optimum surface roughness of 75 - 100 µm, angular, disposable blasting media (aluminum oxide, corundum) should be used. The surface quality is negatively influenced by the use of reusable blasting media (slag, glass, quartz), but also by ice blasting. The air for blasting must be dry and oil-free. Metal parts that have come into contact with sea water or other salt solutions should first be rinsed thoroughly with demineralised water and, if possible, left to rest overnight so that all salts can be dissolved from the metal. Before each application of WEICON WP, a test for soluble salts should be carried out according

Note

The specifications and recommendations given in this technical data sheet must not be seen as guaranteed product characteristics. They are based on our laboratory tests and on practical experience. Since individual application conditions are beyond our knowledge, control and responsibility, this information is provided without any obligation. We do guarantee the continuously high quality of our products. However, own adequate laboratory and practical tests to find out if the product in question meets the requested properties are recommended. A claim cannot be derived from them. The user bears the only responsibility for non-appropriate or other than specified applications.

WEICON Middle East L.L.C. United Arab Emirates phone +971 4 880 25 05 info@weicon.ae

WEICON Czech Republic s.r.o. Czech Republic phone +42 (0) 417 533 013 info@weicon.cz

WEICON GmbH & Co. KG (Headquarters) Germany phone +49 (0) 251 9322 0 info@weicon.de

DANLUBE A/S
Tune Parkvej 5
DK-4030 Tune
Danmark

+45 70 25 12 80
info@danlube.dk
www.danlube.dk

WEICON Inc. Canada phone +1 877 620 8889 info@weicon.ca

WEICON Ibérica S.L. Spain phone +34 (0) 914 7997 34 info@weicon.es

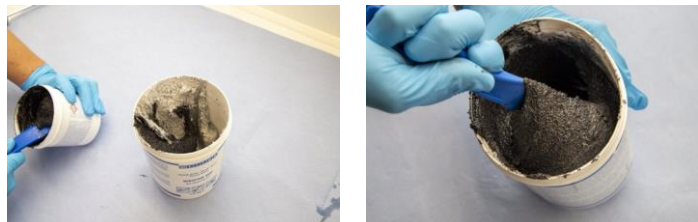
WEICON Italia S.r.l. Italy phone +39 (0) 010 2924 871 info@weicon.it

WEICON WP

to the Bresle method (DIN EN ISO 8502-6). The maximum amount of soluble salts remaining on the substrate should not exceed 40 mg/m². Heating and repeated blasting of the surface may be necessary to remove all soluble salts and moisture. After each mechanical pre-treatment, the surface should be cleaned again with WEICON Cleaner Spray S and protected from further contamination until the coating is applied. Areas where no adhesion to the substrate is desired must be treated with silicone-free mould release agents. For smooth surfaces, we recommend WEICON Mould Release Agent Liquid F 1000 or, for porous surfaces, WEICON Mould Release Agent Wax P 500. After the surface pre-treatment, WEICON WP should be applied as soon as possible (within one hour) to avoid oxidation, flash rust or new contamination.

Mixing

First, stir the resin. Then mix the resin and hardener together thoroughly and bubble-free for at least four minutes at 20°C (68°F). The included processing spatula or a mechanical mixer, such as a mortar stirrer, can be used for this purpose. With mechanical mixers, a low speed of max. 500 rpm should be used. The components should be stirred until a homogeneous mixture is achieved. The mixing ratio of the two components must be strictly observed, as otherwise, strongly deviating physical values will result (max. deviation +/- 2 %). Only prepare a batch as large as can be processed within the pot life of 30 minutes. The specified pot life refers to a material batch of 2 kg and 20°C (68°F) material temperature. Mixing larger quantities or higher processing temperatures will result in faster curing due to the typical reaction heat of epoxy resins.



Application

For processing, we recommend an ambient temperature of 20°C (68°C) at less than 85% relative humidity. The highest adhesive strength is achieved when the parts to be processed are heated to >35°C (>95°F) before application. For a thin pre-coat, work WEICON WP intensively into the surface in crosswise layers using the Contour Spatula Flexy to achieve maximum adhesion. By means of this technique, the epoxy resin penetrates well into all cracks and roughness depths. Afterwards, further applications can be carried out straight away, until the desired layer thickness is reached. Make sure that the epoxy resin is applied evenly and without air bubbles. To fill large gaps or holes, expanded metal or other mechanical fixing materials should be used. Finally, the surface can be smoothed easily with the help of a PE film and a rubber roller.

Curing

Final hardness is reached after 24 hours at 20°C (68°F) at the latest. At lower temperatures, the curing can be accelerated by evenly applying heat up to max. 40°C (104°F), e.g. with a heating pack, hot air blower or fan heater. Higher temperatures shorten the curing time. The following rule of thumb applies: Each increase by +10°C (50°F) above room temperature (20°C/68°F) will decrease the curing time by half. Temperatures below 16°C (61°F) increase the curing time, until at approx. 5°C (41°F) and below, almost no reaction will take place at all.

Storage

Store WEICON WP at room temperature in a dry place. Unopened containers can be stored at temperatures of +18°C to +28°C for at least 36 months after delivery date. Opened containers must be used up within 6 months.

Scope of delivery

Processing Spatula | Contour Spatula Flexy | Instructions for Use | Gloves

Accessories

11202500	Cleaner Spray S, 500 ml, transparent
15200005	Cleaner S, 5 L, colourless, transparent
11207400	Surface Cleaner, 400 ml, transparent
15207005	Surface Cleaner, 5 L, transparent
10604025	Mould Release Agent Liquid F 1000, 250 ml, white, milky
10604515	Mould Release Agent Wax P 500, 150 g
10539115	Repair Stick Multi-Purpose Repair Stick Multi-Purpose, 115 g, vintage white 115 g, vintage white
10850005	Glass Fibre Cloth Tape, 1 PCE, dark grey
10953001	Processing spatula, 1 PCE
10953003	Processing spatula, 1 PCE
15841500	Pump Dispenser WPS 1500, 1,5 L
52000035	Cable Scissors No. 35, 1 PCE
10851010	Processing Kit, 1 PCE

Recommended equipment

Angle grinder blast machine heating pack, hot air blower or fan heater, smoothing trowel, spatula

PE foil 0.2 mm fabric tape paint brush, foam roller rubber roller lint-free cloths

Note

The specifications and recommendations given in this technical data sheet must not be seen as guaranteed product characteristics. They are based on our laboratory tests and on practical experience. Since individual application conditions are beyond our knowledge, control and responsibility, this information is provided without any obligation. We do guarantee the continuously high quality of our products. However, own adequate laboratory and practical tests to find out if the product in question meets the requested properties are recommended. A claim cannot be derived from them. The user bears the only responsibility for non-appropriate or other than specified applications.

WEICON WP

Conversion table

$(^{\circ}\text{C} \times 1,8) + 32 = ^{\circ}\text{F}$
 $\text{mm}/25,4 = \text{inch}$
 $\mu\text{m}/25,4 = \text{mil}$
 $\text{N} \times 0,225 = \text{lb}$
 $\text{N}/\text{mm}^2 \times 145 = \text{psi}$
 $\text{MPa} \times 145 = \text{psi}$

$\text{Nm} \times 8,851 = \text{lb}\cdot\text{in}$
 $\text{Nm} \times 0,738 = \text{lb}\cdot\text{ft}$
 $\text{Nm} \times 141,62 = \text{oz}\cdot\text{in}$
 $\text{mPa}\cdot\text{s} = \text{cP}$
 $\text{N}/\text{cm} \times 0,571 = \text{lb}/\text{in}$
 $\text{kV}/\text{mm} \times 25,4 = \text{V}/\text{mil}$

Available sizes:

10490020 WEICON WP, 2 kg, grey
 10490100 WEICON WP, 10 kg, grey
 10490002 WEICON WP, 200 g, grey

	WEICON A	WEICON B	WEICON BR	WEICON C	WEICON F	WEICON F2	WEICON HB 300	WEICON SF	WEICON ST	WEICON TI	WEICON UW	WEICON WR2	WEICON HP	WEICON Ceramic BL	WEICON GL	WEICON GL-S	WEICON Ceramic W	WEICON Ceramic HC 220	WEICON WP	WEICON WR	WEICON CBC	
Repair and moulding	x	x	x	x	x	x	x	x	x	x	x	x										
Adhesive				x	x		x		x				x									
Wear protection														x	x	x	x	x	x			
Potting and gap filling	x					x						x								x	x	

To the product detail page:



Note

The specifications and recommendations given in this technical data sheet must not be seen as guaranteed product characteristics. They are based on our laboratory tests and on practical experience. Since individual application conditions are beyond our knowledge, control and responsibility, this information is provided without any obligation. We do guarantee the continuously high quality of our products. However, own adequate laboratory and practical tests to find out if the product in question meets the requested properties are recommended. A claim cannot be derived from them. The user bears the only responsibility for non-appropriate or other than specified applications.

WEICON Middle East L.L.C., United Arab Emirates phone +971 4 880 25
05 info@weicon.ae

WEICON Czech Republic s.r.o. Czech Republic phone +42 (0) 417 533
013 info@weicon.cz

WEICON GmbH & Co. KG (Headquarters) Germany phone +49 (0) 251 9322
0 info@weicon.de

WEICON Inc. Canada phone +1 877 620
8889 info@weicon.ca

WEICON Ibérica S.L. Spain phone +34 (0)
914 7997 34 info@weicon.es

WEICON Italia S.r.L. Italy phone +39 (0)
010 2924 871 info@weicon.it

DANLUBE A/S
Tune Parkvej 5
DK-4030 Tune
Danmark

+45 70 25 12 80
info@danlube.dk
www.danlube.dk

WEICON WP

Chemical resistance of WEICON Plastic Metals after curing* (Excerpt)

Exhaust fumes	+	Potassium carbonate	+
Acetone	o	Potassium hydroxide 0-20 % (caustic potash)	+
Ethyl ether	+	Milk of lime	+
Ethyl alcohol	o	Carbolic acid	-
Ethylbenzene	-	Creosote oil	-
Alkalis (alkaline substances)	+	Cresylic acid	-
Hydrocarbons, aliphatic (petroleum derivatives)	+	Magnesium hydroxide	+
Formic acid >10 % (methanoic acid)	-	Maleic acid (cis-ethylenedicarboxylic acid)	+
Ammonia anhydrous 25%	+	Methanol (methyl alcohol) <85 %	-
Amyl acetate	+	Mineral oil	+
Amyl alcohol	+	Naphthalene	-
Hydrocarbons, aromatic (benzene, toluene, xylene)	+	Naphthene	-
Barium hydroxide	+	Sodium carbonate (soda)	+
Petrol (92-100 octane)	+	Sodium bicarbonate (sodium hydrogen carbonate)	+
Hydrobromic acid <10 %	+	Sodium chloride (table salt)	+
Butyl acetate	+	Sodium hydroxide >20 % (caustic soda)	o
Butyl alcohol	+	Caustic soda	+
Calcium hydroxide (slaked lime)	+	Heating oil, diesel	+
Chloroacetic acid	-	Oxalic acid <25 % (ethanedioic acid)	+
Chloroform (trichlormethane)	o	Perchloraethylene	o
Chlorosulphuric acid (wet and dry)	-	Kerosene	+
Chlorinated water (swimming pool concentration)	+	Oils, vegetable and animal	+
Hydrochloric acid	+	Phosphoric acid <5%	+
Chromium bath	+	Phthalic acid, phthalic anhydride	+
Chromic acid	+	Crude oil	+
Diesel fuels	+	Nitric acid <5%	o
Mineral oil and mineral oil products	+	Hydrochloric acid <10 %	+
Acetic acid diluted <5%	+	Sulphur dioxide (wet and dry)	+
Ethanol <85 % (ethyl alcohol)	+	Carbon disulphide	+
Greases, oils and waxes	+	Sulphuric acid <5%	o
Hydrofluoric acid diluted	o	White spirit	+
Tannic acid diluted <7%	+	Carbon tetrachloride (tetrachloromethane)	+
Glycerin (trihydroxipropane)	+	Tetralin (tetrahydronaphthalene)	o
Glycol	o	Toluene	-
Humic acid	+	Hydrogen peroxide <30 % (hydrogen superoxide)	+
Impregnating oils	+	Trichloraethylene	o
Potash	+	Xylene	-

+ = resistant 0 = for a limited time - = not resistant *The storage of all WEICON Plastic Metal types was carried out at +20°C chemical temperature.

Note

The specifications and recommendations given in this technical data sheet must not be seen as guaranteed product characteristics. They are based on our laboratory tests and on practical experience. Since individual application conditions are beyond our knowledge, control and responsibility, this information is provided without any obligation. We do guarantee the continuously high quality of our products. However, own adequate laboratory and practical tests to find out if the product in question meets the requested properties are recommended. A claim cannot be derived from them. The user bears the only responsibility for non-appropriate or other than specified applications.

WEICON Middle East L.L.C. United Arab Emirates phone +971 4 880 25 05 info@weicon.ae

WEICON Czech Republic s.r.o. Czech Republic phone +42 (0) 417 533 013 info@weicon.cz

WEICON GmbH & Co. KG (Headquarters) Germany phone +49 (0) 251 9322 0 info@weicon.de

DANLUBE A/S
Tune Parkvej 5
DK-4030 Tune
Danmark

+45 70 25 12 80
info@danlube.dk
www.danlube.dk

WEICON Inc. Canada phone +1 877 620 8889 info@weicon.ca

WEICON Ibérica S.L. Spain phone +34 (0) 914 7997 34 info@weicon.es

WEICON Italia S.r.l. Italy phone +39 (0) 010 2924 871 info@weicon.it